



Going Places Travel Pte Ltd

日航旅游私人有限公司

Block 202 # 01-485 Bedok North Street 1 Singapore 460202
Email: gptravel@singnet.com.sg Web: www.gptravel.com.sg
Tel : 6442 0010 Fax: 6442 5055

MEMBER
NATAK
NATIONAL ASSOCIATION OF
TRAVEL AGENTS SINGAPORE
TA 1167

8D7N NEPAL GOLDEN TRIANGLE TOUR



OVERVIEW

Explore the Himalayan country with rich ancient cultures set against the most dramatic scenery in the world during your stay. The best way to know the country is to stay in the capital city of Nepal. The city of Kathmandu is a perfect amalgamation of ancient traditional, and modern Nepal. At over 2000 years old, this city has many temples and is very rich in cultural heritage. Immerse & uncover yourself with UNESCO World Heritage Sites of Kathmandu, walk through the narrow streets with old charm and brick houses and witness the country's beauty.

HIGHLIGHTS

- ✚ Cultural Heritage of Kathmandu
- ✚ Buddhist and Hindu way of life
- ✚ Jungle Safari in Chitwan
- ✚ City of Lakes & Nature – Pokhara
- ✚ Well Balanced Program
- ✚

DAY 01: ARRIVE KATHMANDU (NO ACTIVITY)

Welcome to **Kathmandu, Nepal.**

Namaste!

On arrival in Kathmandu: Having cleared immigration, collected your luggage and passed through customs, please make your way towards the exit of the terminal building our representative will be waiting to greet you with a signaged board.

Transfer to Hotel for check-in at Hotel.

Overnight at **Hotel in Kathmandu.**

DAY 02: KATHMANDU (BREAKFAST / LUNCH / DINNER)



MOUNTAIN FLIGHT offers the closest possible aerial views of Mount Everest and the Tibetan Plateau. The 45-minute flight offers an incredible panorama, and you can take a photograph of the world's highest mountain from the cockpit.

For every visitor heading to Nepal for a holiday, the Himalayan range is simply incredible and fascinating for the eyes. Mountain flights are one of the biggest attractions for the Himalayas view & Everest view in Nepal. For those restricted by time or other constraints, mountains flights are the next best alternative to climbing and bring you within almost touching distance of these most enchanting peaks, ensuring you a lasting memory of some of the stunning parts of this planet we live on.

Mt. Everest is more than just the highest mountain in the world; it is the reason why you are here, to see it, to capture in camera, to get as close to it as possible. While on board, you will be able to see some of the highest peaks in the world – Mt. Everest, which is 8,848m (29,029 ft.) and other eight peaks in Nepal, which stands above 8,000m high among the fourteen all over the world, such as Lhotse (8,516m), Nuptse (7,855m), Amadablam (6,812m), Chamlang (7,319m), Makalu

(8,463m), Gauri Shankar (7,134m), Langtang Lirung (7,234m), Annapurna (8,091m), Manaslu (8,136m), Ganesh (7,429m).

After this lifetime experience, drive back to **Hotel for Breakfast**.

After breakfast, you will start with your tour.



Visit **Kathmandu Durbar Square**,

Kathmandu Durbar Square is located in the heart of the old city of Kathmandu. Once the residence of Nepal's royal family, it has numerous ancient shrines and temples in and around the premises. The place is decorated with wood carving and rich architecture and history. All around the splendour of historical monuments is the hustle & bustle of the marketplace. Vegetable vendors, trees of flutes, salespeople with their wares displayed on their person, souvenir hawkers, and a street shop selling imported goods and tucked away in a quiet corner the glittering bead market for custom made bead necklaces.



Then you will visit Swoyambhunath.

Swoyambhunath is also known as 'Monkey Temple' among the tourist visitors. Swoyambhu, which means 'self-existent one', dates back to 460 A.D. and is said to be over 2,000 years old. Resting on the hillock commands a superb view of the Valley below. The four sides of this ancient structure are painted with the compassionate eyes of Buddha. Between the eyes is a mystical third eye symbolising true wisdom. The nose, appearing as an incomplete question mark, is the Nepalese number of one, symbolising unity.

This is perhaps the best place to observe the religious harmony of Hindu and Buddhists. The stupa is highlighted in the morning and evening by devotees who walk around the stupa clockwise, spinning the prayer wheels and chanting prayer.



Afternoon visit **Bhaktapur Durbar Square**.

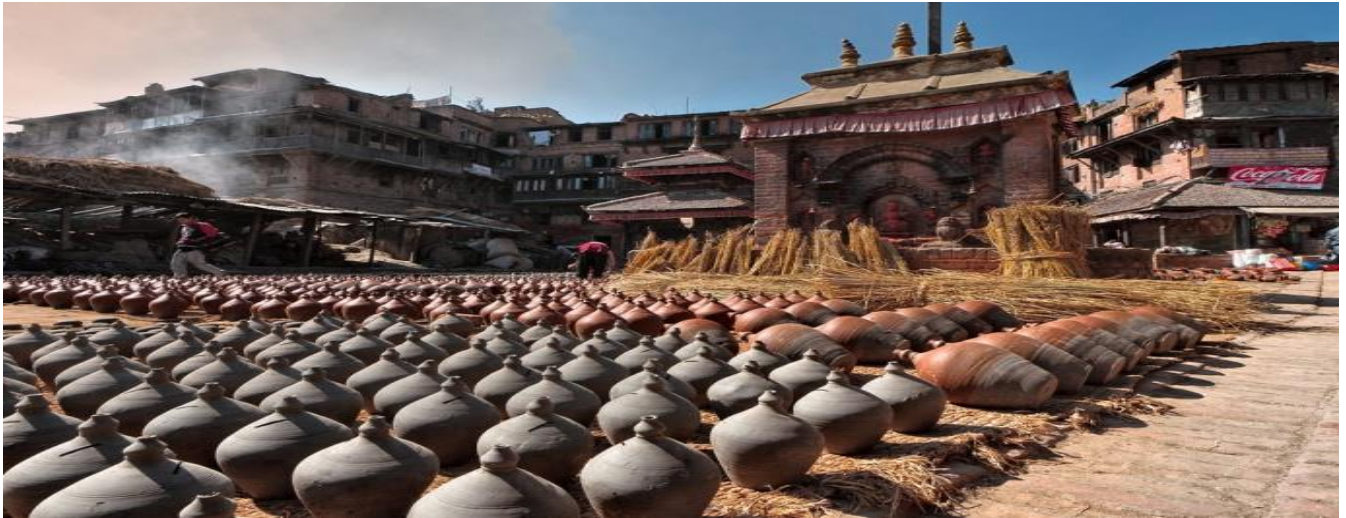
This Square is located in the centre of Bhaktapur city. The Square is one of the most charming architectural showpieces of the Valley as it highlights some of the finest medieval arts of Nepal. It is best known for its exquisite artwork in wood, stone and metal. It's more like an open museum with an ambience that dates back centuries. This Square is one of the most charming showpieces of the Valley. There are many interesting places inside the Square; some are Lion Gate, Golden Gate, the Fifty-Five Windowed Palace, Nyatapola Temple (5 Story temple) and many more.

Visit Pottery Square: Bhaktapur is famous for its traditional pottery industry. The age-old craft has survived the calls for modernisation, and today it enhances Bhaktapur's value as a city of Heritage. The men of Bhaktapur employ primitive techniques. The heavy old wooden wheels have been, for the most part, replaced by weighted truck tires which spin faster. Time permitting, a visit to the Museum of Thangka Painting can also be considered.

Drive back to Hotel.

Overnight at hotel in Kathmandu.

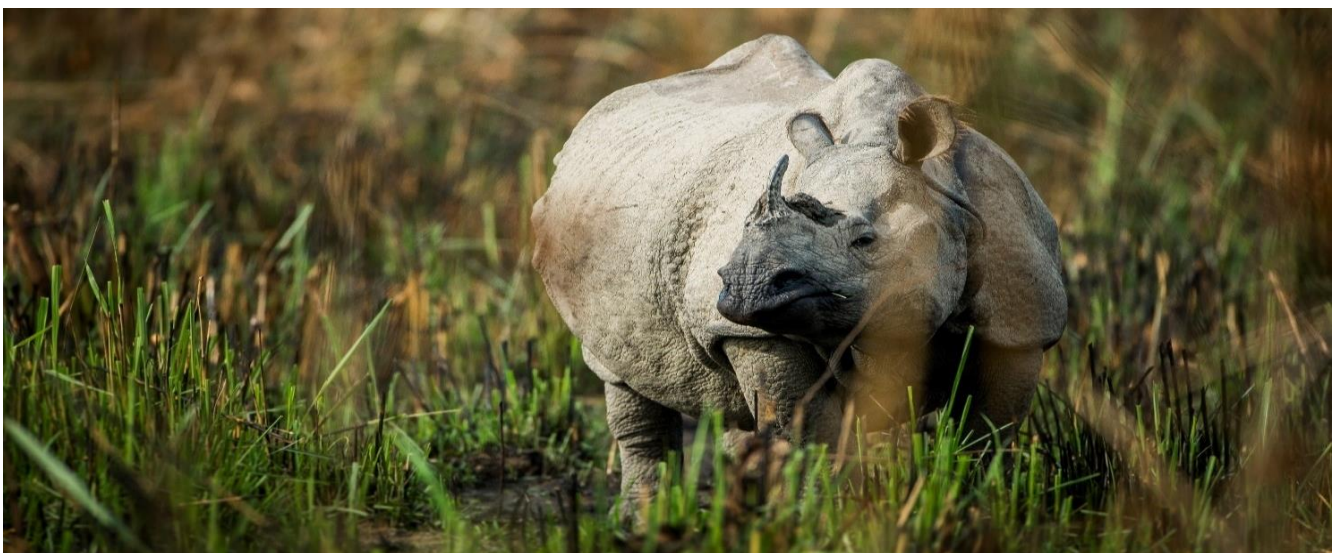
DAY 03: KATHMANDU – CHITWAN (BREAKFAST / LUNCH / DINNER)



Breakfast in Hotel.

After breakfast, fly to Bharatpur airport in Chitwan.

We go to Kathmandu's domestic airport to catch a flight to Bharatpur in Chitwan District. It is a short 20-minute flight to Bharatpur. We have a 45-minute drive to our resort in Chitwan from Bharatpur airport. Upon check-in at the Hotel. Royal Chitwan National Park today stands as a successful testimony of nature conservation in South Asia. This is the first national park of Nepal established in 1973 to preserve a unique ecosystem significantly valuable to the whole world. The park covering a pristine area of 932 sq. km is situated in the subtropical inner Terai lowlands of the southern central part of Nepal. There are more than 43 species of mammals in the park. The park is especially renowned for protecting the endangered one-horned rhinoceros, tiger, gharial crocodile, and many other common species of wild animals. The estimated population of endangered animals includes gaur, wild elephant, four-horned antelope, striped Hyena, pangolin, Gangetic dolphin, monitor lizard and python, chital, hog deer, barking deer, sloth, palm civet, wild dog, langur, rhesus monkey, etc.



Visit Tharu Village on Ox Cart- This is the traditional transport of Tharu people. It is good fun to ride on the ox cart and learn more about the unique culture of this fascinating ethnic group. You will understand their way of farming and how they build their houses with local traditional materials only.

After returning, you will be free for relaxation.

Overnight and Dinner at Resort in Chitwan.

DAY 04: CHITWAN (BREAKFAST / LUNCH / DINNER)



Back to Hotel for Breakfast.

In the Morning Jungle Safari by Jeep

Enjoy Jeep safari, an unusual program, with an experienced driver at the wheel and an expert naturalist leading you deep inside the forests on motorable tracks, exploring the mystery and magic of the jungle from the comfort of your seat. In search of wild animals, this exciting activity includes several types of deer (spotted deer, barking deer, hog deer), monkeys, wild boar, sloth bear, Hyena, leopard and, if lucky, the Royal Bengal tiger. Apart from the wild animals, we would visit deep inside the national park where the Naturalist would brief you about the forest and its types, trees and its species, different species of birds etc. we would take a break in between this activity **for Breakfast** in an especially spotted place overlooking the Narayani river!

Lunch at Resort.

In the afternoon, Canoe ride in the Rapti River to visit the Crocodile breeding centre and later Elephant Breeding Centre, jungle walk back to Hotel.



Bird Watching: Wake-up call followed by tea or coffee and proceeds for bird watching. The Chitwan National Park is home to more than 530 species of birds. Our specialist will help you to view these and identify them. Cormorants, Herons, Egrets, Storks, Cranes, Ducks, Woodpeckers, Hawks, Osprey, Falcons, Kestrel, Parakeets, Ibis, Kites, Cuckoos, Kingfishers, Swallows, Orioles, Drongos, Babblers and many others. Bird watching is always best on foot early in the morning.

Evening: Tharu Stick dance: Farmers of the nearby villages will show some of their traditional skills in dancing.

Overnight and Dinner at Resort in Chitwan.

DAY 05: CHITWAN – POKHARA (BREAKFAST / LUNCH / DINNER)

Breakfast in Hotel.



After Breakfast, drive to Bharatpur airport to catch a short flight to Pokhara.

Pokhara is a remarkable place of natural beauty. Situated at an altitude of 900m from sea level and 200km west of Kathmandu valley, the city is a centre of adventure. The enchanting town has several beautiful lakes and offers stunning panoramic views of Himalayan peaks. The serenity of lakes and the magnificence of the Himalayas rising behind them create an ambience of peace and magic.

Upon arrival, transfer to Hotel for Check-In.

Afternoon Free Time in Pokhara

Overnight in Hotel in Pokhara.

DAY 06: POKHARA (BREAKFAST / LUNCH / DINNER)

Early morning, sunrise view from Sarangkot.

The sunrise above the Himalayan range is spectacular from Sarangkot View tower. The facility of Binocular is available to grasp the closest view of Annapurna Mountain Ranges. We start our trip early morning to Sarangkot and view the sunrise from the hilltop.



En-Route Visit Bindabashini Temple, dedicated to the Hindu goddess Durga (manifested as Bhagwati, a blood-thirsty aspect of the goddess), is located near the busy Old Bazaar of Pokhara. The white pagoda-styled building at some 3000 feet above sea level is significant to Hindus living in Pokhara. People throng to this temple daily and also offer sacrifices of animals. One may also get to witness a Hindu wedding ceremony taking place on the temple premises.

After Breakfast, start with sightseeing of Devi's Fall, Tibetan Refugee Camp

Devi's fall: Devi's fall (also known as Devin's and David's) is a lovely waterfall lying about 2-Km southwest of the Pokhara airport on the Siddhartha Highway. Legend has it that a trekker (Devin, David) was washed away by the Pardi Khola and mysteriously disappeared down into an underground passage beneath the fall.



Gupteswor Cave: One of the largest caves in Pokhara dedicated to Lord Shiva is another nature's wonder in Pokhara.



World Peace Stupa (1100m) is a Buddhist pagoda-style monument on a hilltop in Ananda hill of Pumdi Bhumdi Village Development Committee near Pokhara. Nepal has two of the eighty peace pagodas in the world: Shanti Stupa in Lumbini, the birthplace of Buddha and Shanti Stupa in Pokhara. Shanti Stupa of Pokhara has also become a tourist attraction. It provides a panoramic view of the Annapurna range, Pokhara city and the Phewa Lake.

It is situated about 7 kilometres from the Highway. It is located on the peak and stands as a beacon of peace, and can be seen from every corner of the Pokhara valley. Shanti Stupa is the only stupa in Pokhara located at such a great height. The stupa itself covers 100 metres, and its height is 11 metres. The stupa has been painted white because it is the colour and symbol of peace. Therefore the name is also Peace Stupa. On the pinnacle of the stupa, a golden dome is mounted and is visible from a long distance. Among others, four majestic statues of the Buddha are placed at the four compass points and are most eye-catching. In the afternoon an hour Boat tour at Phewa lake.

Phewa Lake: The centre of attraction in Pokhara is the Phewa Lake - the second largest lake in the Kingdom. It is the largest and most enchanting of the three lakes that add to the resplendence of Pokhara. Here, one can sail or row a hired boat across the water or visit the island temple in the middle, after a boat ride free for shopping in the lakeside market.

Later, drive back to the Hotel.

Overnight is at Hotel in Pokhara.



DAY 07: POKHARA – KATHMANDU (BREAKFAST / LUNCH / DINNER)

Breakfast at Hotel.

After Breakfast, drive to Pokhara airport to fly back Kathmandu.

Transfer to Hotel & check-in Hotel.

Afternoon visit **Patan Durbar Square**,

Patan durbar square is the ancient Royal Palace. Although this durbar square is the smallest amongst the three durbar squares, it is often referred to as the most beautiful one. There are many temples around this place, and it is perhaps the most stunning display of Newari architecture to be seen in the country. There are three central courtyards or chowks: Mul Chowk in the centre, Sundari Chowk, and Keshav Chowk are in the Square. The Sundari Chowk holds in its centre a masterpiece of stone architecture. On the way, visit Golden Temple, a statue of Yogendra Malla, Krishna Mandir etc.

Drive back to Hotel

Overnight in Hotel in Kathmandu.



DAY 08: KATHMANDU- DEPARTURE (BREAKFAST)

Breakfast in Hotel.

After breakfast, it is free and easy until time for transfer to Kathmandu Tribhuvan International Airport for your flight departure to Singapore. Our representative will help you with exit formalities and then bid you farewell.





INCLUSIONS

- + 03 Nights' accommodation at **Hotel Aloft** or Shangrila or Yak and Yeti or a similar Hotel in Kathmandu.
- + 02 Nights' accommodation at **Jungle Villa** or similar Hotel in Chitwan.
- + 02 Nights' accommodation at **Sarankot Lodge or Shangrila village** or Pokhara Grand or similar Hotel in Pokhara.
- + Meals as follow:
 - ❖ 7 Breakfast in hotel
 - ❖ 4 Lunch in restaurant and 2 Lunch in Resort on Day 3 and 4
 - ❖ 4 Dinner in restaurant and 2 Dinner in Resort on Day 3 and 4
- + All transfers in Kathmandu / Chitwan / Pokhara
- + Domestic flights between inter cities for transfers and sightseeing tours in Kathmandu – Chitwan – Pokhara – Kathmandu as per the itinerary.
- + English Speaking Local Guide during the sightseeing tour in Kathmandu & Pokhara.
- + English speaking naturalist during the jungle activities.
- + One hour Boat tour at Phewa Lake.
- + High-speed WIFI in the Hotel.
- + All applicable Govt. taxes.

EXCLUSIONS

- + Nepal Visa Fee US\$30.00 per person for 15 days.
- + All International Air Tickets
- + Monument entrance fees at US\$40 per person
- + Tips for Guide, Driver, Porter at US\$10 per person per day.
- + Drinks, laundry, telephone calls bills, Internet bills.
- + All Personal Expenses
- + All Travel insurance.